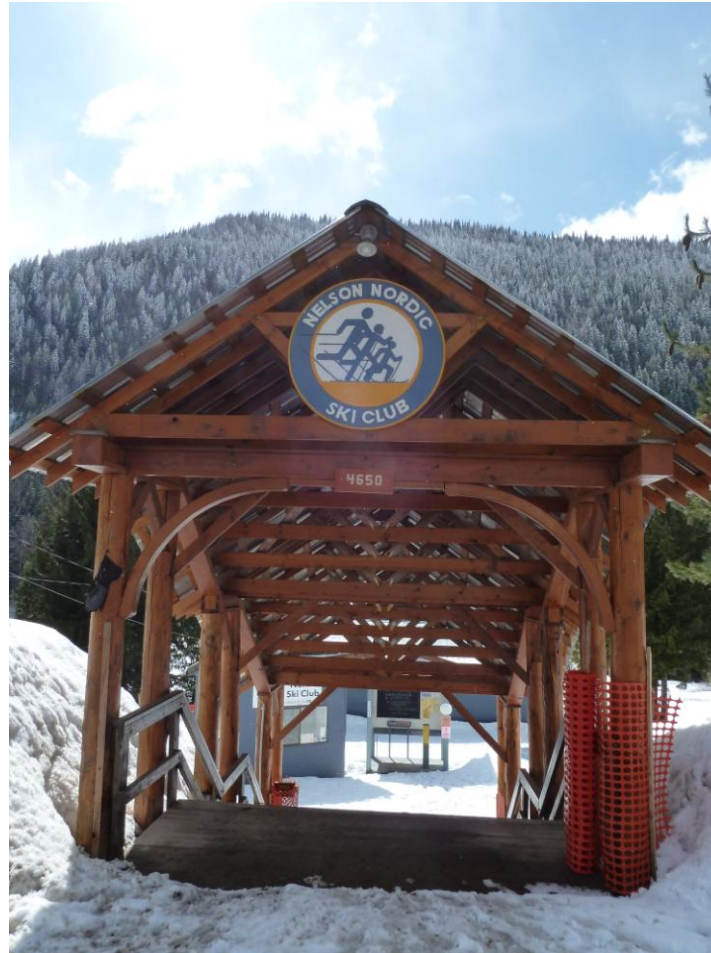


Nelson Nordic Ski Club – May 2014 30 year anniversary?



What's in it for me?



- Unique club - hard to compare with others
- 82 Volunteers racking up more than 300 hours
- 6 full time staff, 4 part time
- Importance of choice and sustainability

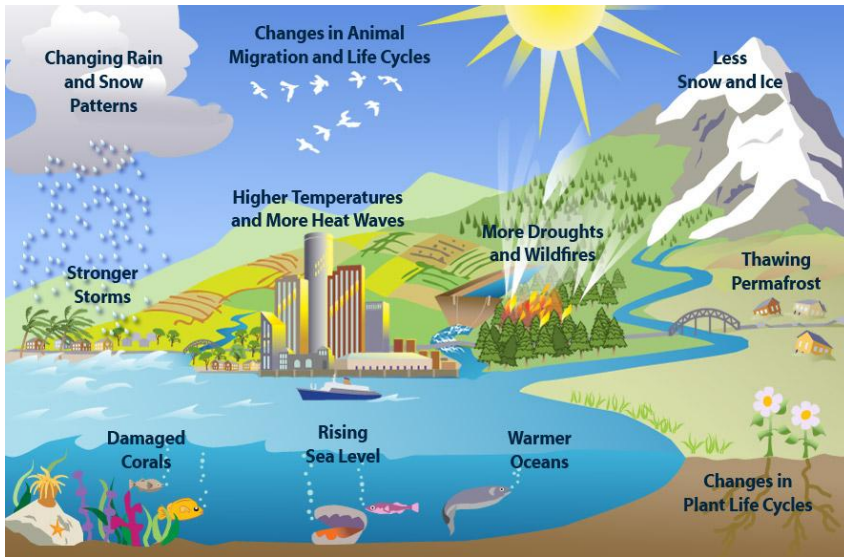


Programs & Events





Climate Change





Summary

- 2013/14 Issues
- 1. Theft
- 2. Parking violations
- 3. Continued lawsuit
- 4. Not enough coaches for SDP
- 5. Track Attack vs Junior Race Team option
- Things to do:
- 1. Equipment decisions
- 2. Update PP
- 3. Update SP
- 4. Revise board operations
- 5. Job descriptions
- 6. Staff contracts
- 7. Club excellence?
- 8. Update website